

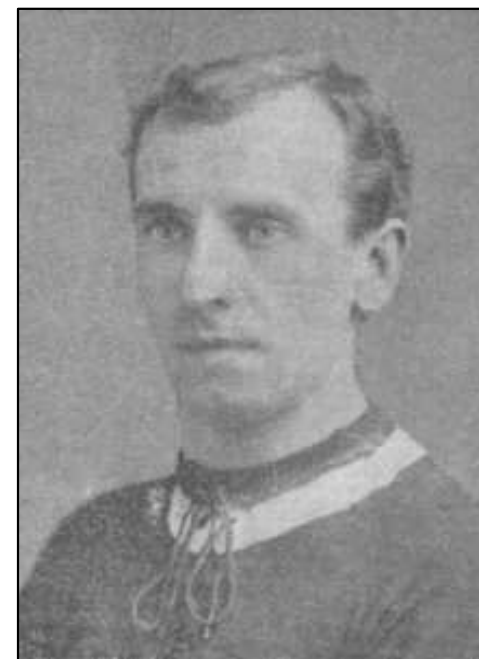
CHRISTIE	John Coubrough
-----------------	----------------

<i>Date of Birth</i>	8.2.1881	<i>Place of Birth</i>	Carlton, Glasgow		
<i>Date of Death</i>	21.11.1934	<i>Place of Death</i>	Manchester		
<i>Height</i>	5ft 7in	<i>Weight</i>	11st 4lb	<i>Position</i>	Full Back

<i>Club</i>	<i>Joined</i>	<i>Season</i>	F L		F A		S L		W L		U L		S E		TOTALS	
			A	G	A	G	A	G	A	G	A	G	A	G		
Sale Holmefield																
Manchester United	9.1902	1902-03	1	0											1	0
Manchester City	14.5.1904	1904-05	1	0											1	0
		1905-06	5	0											5	0
		1906-07	4	0											4	0
Bradford Park Avenue	21.5.1907	1907-08					14	0							14	0
Croydon Common	14.4.1908	1908-09			10	0	12	0	10	0	7	0	26	0	65	0
		1909-10			3	0	24	0							27	0
Brentford	9.1910	1910-11					5	0							5	0
Altringham	8.1912															
		TOTALS	11	0	13	0	55	0	10	0	7	0	26	0	122	0

<i>Internationals</i>	None	<i>F.A. Cup Finals</i>	None	<i>Cigarette/Trade Cards</i>	None
-----------------------	------	------------------------	------	------------------------------	------

<i>Jottings</i>
The 1901 Census records him as a 17 year old railway porter
Was signed by Manchester United as a successor to HARRY STAFFORD (1896-1903)
Played in Croydon Common's F.A. Cup victory over his previous club Bradford Park Avenue in 1908-09
Appeared for Croydon Common in 4 minor cup matches, without scoring
Won a Southern League Division 2 championship medal with Croydon Common
Won a Great Western Suburban League championship medal with Brentford and also appeared for them in the London League, the London Challenge Cup and the London Professional Charity Fund
Played for a London XI v. a Paris XI in December 1910 and appears in the team photograph in Lottingas Weekly (14.1.1911)
Jointly held the Croydon Common record for F.A. Cup appearances in a season (10)
Married Lilian Daisy Watson in 1913 in Croydon.
The 1911 Census records him living in The Leslie Arms, 62 Lower Addiscombe Road, Croydon along with Percy Barnfather
Served in both the Royal Navy and the Royal Air Force during WW1 (<i>further research being undertaken</i>)
<i>Not big a backs go but a master of strategy who saves himself a lot of trouble by intelligent anticipation of opponents' moves</i>



CHRISTIE	John
----------	------



Manchester City 1905-06